



# 2020 GP PRODUCT



# What's Inside

## INTRODUCTION

Who We Are .....	1
Our Brands .....	2 - 3
Explore What's New .....	4
Farrier Favorites .....	5

## STEEL HORSESHOES

Kerckhaert SX-Series .....	6 - 7
Kerckhaert Standard Series .....	8 - 9
Kerckhaert Prime Fit .....	10
Kerckhaert Pride Series .....	11
Kerckhaert Steel Triumph/Trek Series .....	12 - 13
Kerckhaert DF Series .....	14 - 15
Kerckhaert Meister Series .....	16
Kerckhaert Comfort Series .....	17
Kerckhaert Classic Roller .....	18
Other Popular Kerckhaert Styles .....	19

## ALUMINUM RIDING HORSESHOES

Kerckhaert Aluminum Century Series .....	20
Kerckhaert Triumph Aluminum Series .....	21

## HORSESHOE NAILS

Liberty Horseshoe Nails .....	22 - 23
-------------------------------	---------

## TOOLS AND EQUIPMENT

Diamond Tools .....	24 - 25
FootPro Tools .....	26
Bloom Forge Tools .....	27
Save Edge Rasps .....	28 - 29
Baldor Grinders & Attachments .....	30
Traction Products .....	31
Hoofjack Hoof Stands & Accessories .....	32 - 33

## HOOF CARE

Vettec Hoofcare .....	34 - 35
Plexus and FootPro Hoofcare .....	36



## Who We Are

FPD has always chosen to represent the best of the brands available in the farrier industry. As the exclusive distributor of products from Kerckhaert's House of Brands, FPD has grown to be the largest wholesale distributor of farrier products in the US and Canada. Kerckhaert's innovation and attention to quality has been integral to our growth and success. When choosing the brands we distribute, we insist the products are designed with the professional farrier in mind; providing the best choices across all disciplines. Quality, dependability and availability are the hallmarks of all brands we represent. Kerckhaert's House of Brands, including Kerckhaert Horseshoes, Liberty Nails, Diamond, Hoofjack, Save Edge and Vettec – along with FootPro, Plexus and Bloom Forge - have long been premier brands FPD distributes in North America.

FPD continues to reach out to farriers to determine what works for them – and what doesn't. We provide multiple opportunities for farriers to connect and communicate with FPD on various social media platforms, including Facebook, Instagram and YouTube. Top farriers and clinicians in the industry are spending time at the FootPro Workshop, sharing techniques and wisdom for farriers interested in expanding their own knowledge and skill. The team at FPD is always on the road, sponsoring and attending farrier clinics and educational opportunities; ensuring the professional farrier has the support needed to grow and flourish in their business.

**More information about FPD and their product lines can be found at [farrierproducts.com](http://farrierproducts.com).**



## HOUSE OF BRANDS



# Our Key Brands

FPD is proud to be the exclusive distributor in US and Canada of the Kerckhaert House of Brands. Designed with the professional farrier in mind, the House of Brands offers the best choices across all disciplines.

## Kerckhaert

The world's largest independent manufacturer of horse shoes. Steel and aluminum riding horse shoes, aluminum racing plates, draft, pony and other styles.



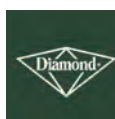
## Liberty

Engineered by Kerckhaert to meet the demand for a high quality nail. City, Race, Regular, Slim, E-Head, Hybrid, LX, Lite and Carrera styles available in Steel and Cu Copper Coating.



## Diamond

A division of Kerckhaert Horseshoe Factory featuring quality horseshoes, hoofcare and tools for farriers.



## Vettec

Vettec's extensive line of hoof related materials allow the hoof care professional to complete hoof repairs and glue on shoes with the highest level of quality.



## Hoofjack

Whether it is the horse owner, trimmer, farrier or veterinarian, Hoofjack offers an easier way to support the horse's hoof. Hoofjack is producing a growing line of accessories.



## Save Edge

Cutting-edge technology and machines are meticulously developed in-house, empowering us to pioneer advancements in hoof rasp manufacturing.



# We Also Distribute These Fine Brands

Quality, dependability and availability are the hallmarks of FPD and all the brands it represents.

## Plexus

Plexus pads are available exclusively at FPD Dealers. Made in the U.S., Austin Edens' Plexus Pads feature a patent pending, common sense design.



## Bloom Forge

The best line of forging tools in North America. Knives, tongs, hammers, forepunches, pritchels and clinching tools.



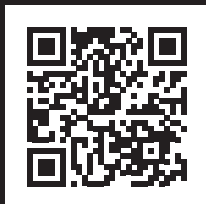
## Other Brands and Products

- Gibbins - Aprons
- Hot Iron Productions - Forging and Shoeing Videos
- TEP - Lily Pads and Hoof Pads
- KnKut Drill and Tapping Products
- Baldor Buffers and Grinders
- Full Line of Abrasives



# Explore What's New

Discover new and featured products online at [farrierproducts.com/new](http://farrierproducts.com/new).



**SAVE EDGE RASPS**  
PG 28



**BLOOM HOT FIT LOCK TONG**  
PG 27



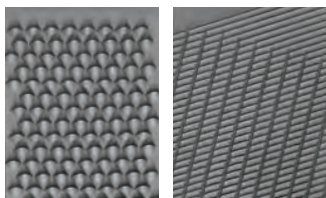
**DURA MAX**  
PG 8



**LIBERTY SECURE HARDTOP NAILS**  
PG 23



**HOOFJACK PASTER  
CRADLE**  
PG 32



**DIAMOND EXCEED RASP**  
PG 24



# Farrier Favorites

Find an FPD Dealer near you carrying these farrier favorites at [farrierproducts.com/locations](http://farrierproducts.com/locations).



**KERCKHAERT  
PRIME FIT**  
PG 10



**REDESIGNED  
SX-8 SELECT**  
PG 17



**BALDOR GRINDERS**  
PG 30



**KERCKHAERT  
CLASSIC ROLLER**  
PG 18



**PLEXUS PERFORMANCE  
PADS**  
PG 36

**FOOTPRO  
DIM**  
PG 36

**DIAMOND MAX  
GLIDE RASP**  
PG 24

# SX-Series

Since the 1990's, North America's broadest and most popular series of front and hind shoes; with options to shoe most riding horse breeds and disciplines.



## SX-7

- Quarter Horses and Light Breeds
- 1/4" x 3/4"
- Front and hind patterns
- Clipped and unclipped options



## SX-8

- Multi purpose shoe for all breeds in Show Disciplines, Ranch & Trail
- 5/16"x3/4"
- Front and hind patterns
- Clipped and unclipped options
- Includes shape options: SX Select Hind and SX Roller (half-round) Front

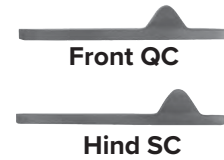
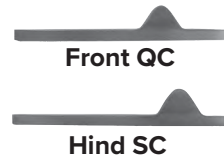
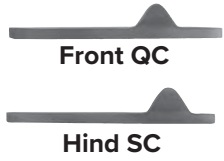


## SX-10

- Multi purpose shoe for all breeds and disciplines that require a stronger shoe and steel section
- 3/8"x7/8"
- Front and hind patterns
- Clipped only

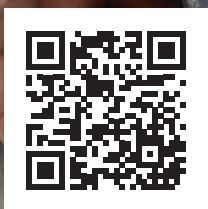


**KERCKHAERT SX SERIES  
SHOE STYLES**



The redesigned SX-8 Select has a more narrow toe, making it easier to fit to the American Quarter Horse foot.

FIND SPECIFICATIONS AND VIDEOS OF THE SX SERIES IN ACTION AT [FARRIERPRODUCTS.COM/SX](http://FARRIERPRODUCTS.COM/SX)



# Standard Series

The Kerckhaert Standard series are one-shape pattern shoes. With unbeatable quality, they are popular with farriers who prefer to shape their own fronts and hinds.



## Standard

- One shape pattern
- 5/16" thickness
- Full toe, inside bevel, sole relief and slight taper to heel area

## Lite

- One shape pattern
- 1/4" thickness
- Lighter 18x7 steel size
- Same features as the Standard
- The bevels on the inside and outside offer good breakover, as well as excellent grip in arena surfaces, trails and cross-country terrain



## Extra

- One shape pattern
- 5/16" thickness
- Wide-web pattern designed to give protection and support, especially in rough terrain
- Bevel on the ground side, sole relief and slight taper to heel area



## Dura Max

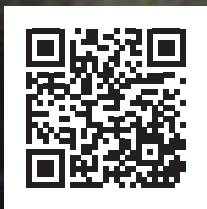
- 3/8" Generic Pattern Shoe
- Combination of the popular Dura Plain and Standard Max
- Punched for Combo Slim nails



**KERCKHAERT STANDARD SERIES  
SHOE STYLES**



FIND SPECIFICATIONS AND VIDEOS OF THE STANDARD SERIES  
IN ACTION AT [FARRIERPRODUCTS.COM/STANDARD](https://www.fARRIERPRODUCTS.COM/STANDARD)





# Prime Fit

The ultimate keg shoe for the North American market. This drop forged shoe offers a competitively priced option for Pleasure, Trail and Ranch horses. Its easy-to-fit front and hind shapes will minimize fitting time. Full 5/16" thick stock has a V-Crease; accommodating a range of American style nails, including Combo Slim, Slim and City.



## PRIME FIT

- 5/16" thickness
- Front and hind patterns
- Unclipped only
- Excellent heel support
- Sole relief
- V-Crease for best nail fit
- Center mark helps with fitting and nailing



FIND SPECIFICATIONS AND VIDEOS OF THIS SHOE IN ACTION AT [FARRIERPRODUCTS.COM/PRIME](http://FARRIERPRODUCTS.COM/PRIME)





# Pride Series

The Pride series has become the most popular choice in the market for Western horses involved in reining, roping and other disciplines involving the need for some "slide" in their stops. Excellent steel quality, good punching patterns and shapes make shoeing much more efficient.



## Sliding Plates

- 1/4" x 7/8": 8 nail hole pattern
- 1/4" x 1": Good all around choice. Made with higher carbon steel for better wear and has a slight taper to 7/8" in heel. 6 nail-hole pattern
- 1/4" x 1-1/4": slightly wider version. Tapered to 7/8" in heel. 6 nail hole pattern
- Hind only pattern
- Unclipped

FIND SPECIFICATIONS AND VIDEOS OF THE PRIDE SERIES IN ACTION AT [FARRIERPRODUCTS.COM/PRIDE](http://FARRIERPRODUCTS.COM/PRIDE)



## Pride Fine Sliding Plates

- 1/4" x 1"
- Hind pattern only
- Unclipped
- Finer punch pattern
- Slight taper in heel
- Pattern works best for a shoe fit that is very close to a perimeter fit, where the shoe is not set forward
- 8 nail hole pattern



## Pride 1/4" x 3/4"

- Flat shoe
- Front and hind patterns
- No crease

# Steel Triumph Series

The Triumph series has been popular for many years for good reason. The steel Triumph and Lite Triumph provide extra traction for Event, Trail and Working Ranch horses. The new Trek offers another good option with the generic shape that can easily be shaped to front or hind. The Lite Triumph is especially nice on horses with smaller feet working in controlled footing.



## STEEL TRIUMPH

- 3/8" thickness
- Front and hind patterns
- Clipped and unclipped options



## STEEL TRIUMPH LITE

- 5/16" thickness
- Front only pattern
- Unclipped only



## TREK

- 3/8" thickness
- One shape pattern
- Unclipped only
- Bevel design maintains shoe mechanics and increases wear
- Increased crease length
- Deeper V-crease
- Increased width of outer and inner rims
- Center mark helps with fitting and nailing



**KERCKHAERT STEEL  
TRIUMPH SERIES STYLES**



**Unclipped  
Front**



**Unclipped  
Hind**



**Clipped  
Front**



**Clipped  
Hind**



**Front QC**



**Hind SC**



**Lite Front  
Unclipped**



**Lite Hind  
Unclipped**



**Trek  
Unclipped**

FIND SPECIFICATIONS AND VIDEOS OF THESE SHOES IN ACTION AT [FARRIERPRODUCTS.COM/TRIUMPHTREK](http://FARRIERPRODUCTS.COM/TRIUMPHTREK)



# DF Series

The broadest selection of features, different web sizes, clip positions and nail hole sizing. All DF shoes are punched for E-Head nails.



## Quarter Clipped

- 8mm front only pattern
- 10mm front only pattern
- Quarter clipped
- Popular in the Jumper circuit



## Select

- 8mm hind only pattern
- 10mm hind only pattern
- Side clipped
- Excellent choice for the hunter jumper market
- Heels are elongated and tapered
- Widest part of the shoe is moved forward, allowing an extended heel fit



## Quarter Motion & Plus

- 8mm front only pattern
- Quarter clipped
- Designed with a beveled toe on the ground surface which allows the hoof and limb to breakover with less stress, strain and more comfortable lateral movement
- Quarter Motion Plus has a wider toe and heel design



## Grand Prix

- 8mm hind only pattern
- Side clipped
- Specifically designed for the hunter jumper market
- Wider outside branch gives additional support in the heel area



# KERCKHAERT DF SERIES STYLES



DF Front



DF Hind



Front TC



Front QC



Hind SC



DF Select Hind



DF Quarter Motion Front



DF Quarter Motion Plus Front



Hind SC



Front QC



Front QC



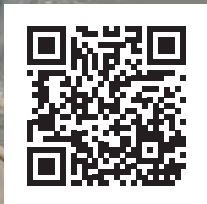
DF Grand Prix Hind



Hind SC

FIND SPECIFICATIONS AND VIDEOS OF THE DF SERIES IN ACTION AT [FARRIERPRODUCTS.COM/DF](http://FARRIERPRODUCTS.COM/DF)





# Meister Series

The Meister shoe is wider in the toe and heel area, where the foot needs more support, the branches are narrower, so that they are more easily modified. The Meister Motion features a beveled toe on the ground surface, allowing the hoof and limb to breakover with less stress and strain. The bevel continues around the branches of the shoes for more comfortable lateral movement.

## KERCKHAERT MEISTER SHOE STYLES



Front QC



Front TC



Hind SC



Front QC

FIND SPECIFICATIONS AND VIDEOS OF THE MEISTER SERIES IN ACTION AT [FARRIERPRODUCTS.COM/MEISTER](http://FARRIERPRODUCTS.COM/MEISTER)



# Comfort Series

Designed for ease of breakover and good support. The Steel Comfort Sport features clips between the 2nd and 3rd nail holes and slightly wider heels for extra support. It is pre-marked to drill for traction devices in the heel area. The Aluminum Comfort offers a lighter weight option.

## KERCKHAERT STEEL COMFORT SHOE STYLES



Steel Comfort Side Clipped

Front SC



Steel Comfort Sport Quarter Clipped

Front QC

FIND SPECIFICATIONS AND VIDEOS OF THE STEEL COMFORT SERIES IN ACTION AT [FARRIERPRODUCTS.COM/STCOMFORT](http://FARRIERPRODUCTS.COM/STCOMFORT)

## KERCKHAERT ALUMINUM COMFORT SHOE STYLES



Aluminum Comfort



Front QC

FIND SPECIFICATIONS AND VIDEOS OF THE ALUMINUM COMFORT SERIES IN ACTION AT [FARRIERPRODUCTS.COM/ALCOMFORT](http://FARRIERPRODUCTS.COM/ALCOMFORT)

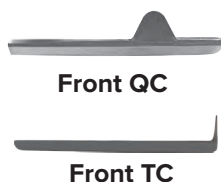


# Classic Roller



While a half round style, this shoe has more ground surface than a true half round. The Classic Roller is available in quarter clipped or toe clipped front, and side clipped hind.

## KERCKHAERT CLASSIC ROLLER SHOE STYLES



FIND SPECIFICATIONS AND VIDEOS OF THE CLASSIC ROLLER IN ACTION AT [FARRIERPRODUCTS.COM/CLASSICROLLER](https://www.fARRIERPRODUCTS.COM/CLASSICROLLER)



# Other Popular Steel Styles

## Draft

- Strong toe clips on both front and hind patterns
- Shapes correspond to the natural shape of the draft horse
- 10mm and 12mm thickness
- Front and hind patterns
- Unclipped and Toe Clipped



## Concave

- Wide selection of shoes with radius clips
- 10mm and 11mm thickness
- Front and Hind patterns
- Quarter and toe clipped fronts
- Side clipped hinds



## SSP

- Original unclipped style sold in the US, popular with the hunter and jumper circuit
- Available in a broad choice of steel sizes
- 8mm and 10mm thickness
- Front only pattern
- Unclipped

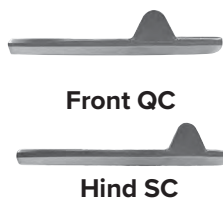


# Aluminum Century Series



The Aluminum Century unclipped is built for smaller feet that require a narrower shape, with less width in the toe. The Aluminum Century Clipped is thicker than the Triumph series and provides excellent support in the heel area.

## KERCKHAERT ALUMINUM CENTURY SHOE STYLES



FIND SPECIFICATIONS AND VIDEOS OF THE CENTURY SERIES IN ACTION AT [FARRIERPRODUCTS.COM/CENTURY](http://FARRIERPRODUCTS.COM/CENTURY)





# Triumph Aluminum Series

This drop forged, aluminum shoe is commonly used by the Western Pleasure market, as well as the Hunter and Thoroughbred. Shape and width of stock provide excellent support. The Triumph Aluminum Clipped is popular in the Hunter market due to its broad toe shape and strong clips.

## KERCKHAERT TRIUMPH ALUMINUM SHOE STYLES



FIND SPECIFICATIONS AND VIDEOS OF THE TRIUMPH ALUMINUM SERIES IN ACTION AT [FARRIERPRODUCTS.COM/ALTRIUMPH](http://FARRIERPRODUCTS.COM/ALTRIUMPH)

# Liberty Nails



## Race

Used most often on Thoroughbred, Quarter Horse or Standardbred race horses that wear light steel or aluminum shoes.



## City

The blades are slightly larger in dimension to provide more strength and durability. Most of the American style shoes in the market are punched for 5 City and 5 Slim.



## Slim

Slim blade nails are used primarily for riding horses. The slimmer blade is preferred by many farriers because it displaces less hoof and reduces damage to the wall.



## Hybrid

The Liberty hybrid head design works well in concave and shoes punched for E-head nails. The extra length and pitch provide a perfect combination for use with pads.



## LX

The LX style nails are a hybrid head design that is similar to the E head but is more rectangular. Often used in rim or concave style shoes but they are used in European style flat shoes as well.



## Combo and Combo Slim

Combo nails are a modification of the City or Slim nail. The heads are slightly larger but yet the shank is still similar to the City or Slim. They are often used for resetting when nail holes have enlarged or with shoes that have a wide crease.



## Combo Slim HardTop

Combo Slim style with a special hardening process on the top of the head; providing additional wear and strength.

FIND SPECIFICATIONS AND VIDEOS  
OF LIBERTY NAILS IN ACTION AT  
[FARRIERPRODUCTS.COM/LIBERTY](http://FARRIERPRODUCTS.COM/LIBERTY)



### **E-Slim**

These European style nails fit well in shoes like the Kerckhaert DF and SSP series that were made first for the European market. Used most often in the Hunter and Jumper discipline.



### **E-Head**

The E-head nail has more strength because the shank comes out of the center of the head, with slightly more mass. Used most often in the Hunter and Jumper discipline.



### **Regular**

Regular head nails have a larger head than the City styles. The shank of the nail is also proportionately larger than City styles. They are used for resets but are also used for horses that are working on difficult terrain or have traction devices that create more stress on the nails.



### **Lite**

A popular nail for farriers shoeing the Saddlebred, Morgan and other gaited breeds and draft horses.



### **Carrera**

Slight extra neck fits more securely in the punching, a slim shank and only a minimal amount of head above the shoe surface. Three sizes available: Small (4), Medium (4.5) and Long (5).



### **Secure HardTop**

These nails are an E head style, with a special hardening process on the top of the head; providing additional wear and strength.

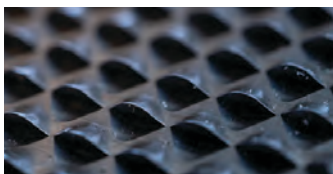


# Diamond Tools



## Diamond Max Glide Rasp

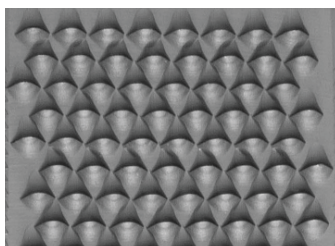
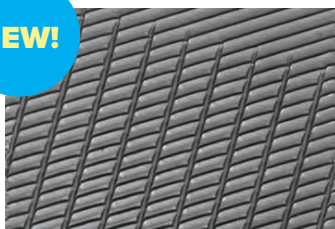
- Unique production process for long-term sharpness
- 10% wider than standard rasp, levels the hoof with ease and efficiency
- Chip Breaker file side for smooth finish
- Aggressive rasp side (9 teeth/row) prevents clogging



## Diamond Exceed Rasp

- Most aggressive rasp in the Diamond line
- High quality steel ensures the rasp stays sharp
- 10% wider than standard rasp, levels the hoof with ease and efficiency
- Chip Breaker file side for smooth finish
- Coarse side is exceedingly effective in removing hoof wall with ease thanks to the carefully designed angle of the rasp teeth

**NEW!**



## Hoof Nippers

- Professional quality nippers, precision manufactured from special alloy steel
- Available in 12", 14" and 15" models
- 12" nipper is used for race horses, smaller horses and foals
- 15" Extra Sharp nipper offers maximum leverage and cutting ability



## Nail Cutters

- Available in a 8" and 10" model
- Induction hardened cutting edges
- Semi-rounded face and wide throat for close, precision cuts
- Economical, high-performance tool
- KX Nail cutter (pictured) is 12" in length and has an elliptical formed joint for easy one-handed or two-handed operation

FIND SPECIFICATIONS AND VIDEOS  
OF DIAMOND TOOLS IN ACTION  
AT [FARRIERPRODUCTS.COM/  
DIAMONDTOOLS](http://FARRIERPRODUCTS.COM/DIAMONDTOOLS)



## Diamond Hoof Knives

- Removes excess sole and trims the frog
- Stainless steel blades maintain a sharp edge for clean, fast cuts
- Hardwood handles for a comfortable grip



**Narrow Right & Left**



**Wide Right & Left**



**Drop Blade Right & Left**



**Double Edge**



**Loop Knife**

## Other Products from Diamond

- Diamond Farrier Tong
- Diamond Clinch Block
- Diamond Double Clinch Groover/Gouge
- Diamond 6" Clinch Cutter
- Diamond 12" Pritchel
- Diamond Combination Shoe/Puller/Spreader
- Diamond Hoof Pick
- Diamond 12" Saddle Horse Clincher
- Diamond Crease Nail Puller
- Diamond Multi-Tool
- Diamond All-in-One Sharpener
- Diamond Toeing Knife
- Diamond Fence Tool
- Diamond Poly Twist-On Rasp Handle
- Diamond Wood/Polyurethane Twist-On Rasp Handle
- Diamond Rounding Hammers
- Diamond Driving Hammers
- Diamond 7 oz. Driving Hammer
- Diamond Tool Roll
- Diamond Cartridge Applicator Gun
- Diamond Pad Shears
- Diamond Light Apron
- Diamond Pro Apron with Back Pad
- Diamond Stall Jacks
- Diamond Aluminum Base Anvil
- Diamond Frog Dressing

# FootPro Tools



Developed by FPD based on years of feedback from professional farriers. Many of the tools are made in the US, including the Hoof Nippers and Hammers.



## FootPro Polished Nippers

- Available in 12" Race Track, 14" Race Track, 14" and 15" models



## FootPro Half Round Nippers

- Useful for resections and taking out excessive sole



## FootPro Rounding Hammers

- 1.75 lb and 2 lb models
- Used to shape horseshoes and do other forging blacksmithing work
- Replacement handles are also available



## FootPro Nail Puller

- Crease nail puller designed for higher leverage with less effort
- 11-1/2" long
- Made with high-grade tool steel

FIND SPECIFICATIONS AND VIDEOS OF FOOTPRO TOOLS IN ACTION AT [FARRIERPRODUCTS.COM/FOOTPROTOOLS](http://FARRIERPRODUCTS.COM/FOOTPROTOOLS)



## Other FootPro Tools

- FootPro Angled Clincher
- FootPro Sandbox Regular Flat and Half-Round
- FootPro Tool Roll
- FootPro File Roll
- FootPro Aluminum Rasp Handles
- FootPro Jumbo Butcher Block Brush
- FootPro Tool Wrap
- FootPro Knife Sharpener
- FootPro Folding Brass Ruler
- FootPro Brass Hoof Balance Ruler
- FootPro Moisture Meter

# Bloom Tools



Roy Bloom is recognized throughout the industry for the attention to detail and performance of the products he manufactures. Bloom Forge offers an extensive line of forging and shoeing tools.

FIND SPECIFICATIONS AND VIDEOS OF BLOOM TOOLS IN ACTION AT [FARRIERPRODUCTS.COM/BLOOMTOOLS](http://FARRIERPRODUCTS.COM/BLOOMTOOLS)



## Hammers

- Rounding Hammers (1-3/4, 2, 2-1/2 lb.)
- 1-3/4 lb. Clipping Hammer
- 2 lb. Cross Pein Hammer
- Wood Handle Set Hammer
- Replacement Hammer Handles



## Signature Series Hammers

- Rounding Hammers (1-3/4, 2, 2-1/2 lb.)
- 20-Degree Cross Pein Hammer
- Cross Pein Hammer
- Clipping Hammer
- 8 lb. & 10 lb. Sledge Hammers

## Tongs

- Fire Tongs (1/4", 5/16", 3/8", 1/2")
- Hot Fit Tongs
- Replacement Tong Rivets
- Hot Fit Lock Tong - New!

**NEW!**



## Loop Knife

- Laminated handle designed to eliminate pressure on wrists
- High carbon steel with easily sharpened composition



## Other Bloom Tools

- Long Pritchel
- H-13 Pritchel
- City Forepunch
- Small and Large Bob Punch
- Stud Punch (5/16" Round)
- Push Gouge
- Clinch Block
- E-Head Forepunch
- City Drift
- Creaser (right/left)
- Draft Creaser
- Combo Cut (right/left)
- Foot Stand Combo Cut (right/left)
- Clinch Undercut (right/left)
- Clinch Cutter (right/left)
- Forepunch Gauge
- Nail Layout T-Square
- Hot Cut

# Save Edge Rasps

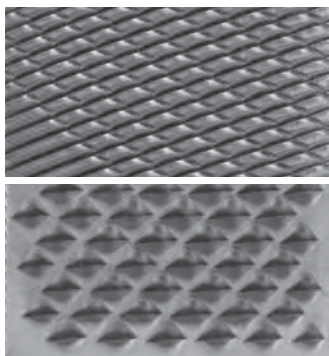
NEW!



At Save Edge, innovation is ingrained in our DNA. Our cutting-edge technology and machines are meticulously developed in-house, empowering us to pioneer advancements in hoof rasp manufacturing.

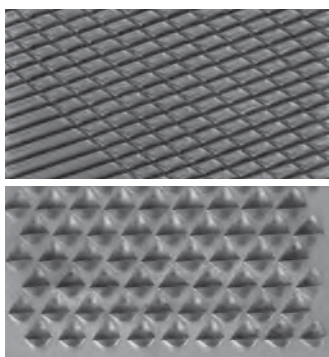
## The Original Rasp 14"

Known for having a smooth yet aggressive cutting action. Due to the superior tooth design and precision sharpening process, the Original Rasp has been the industry standard since its launch.



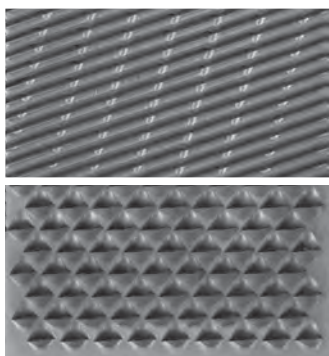
## Dark Horse Rasp 14"

A hybrid between the Save Edge Original Rasp and the Save Edge 14" Beast Rasp. The Dark Horse is 10% wider, yet light and balanced, making it more efficient to use. With a larger working surface, it helps improve leveling, control and efficiency. Both sides are designed to remove more material easier with a feature that provides less clogging and longevity of the rasp.



## White Horse Rasp 14"

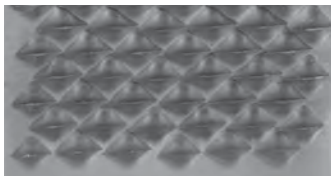
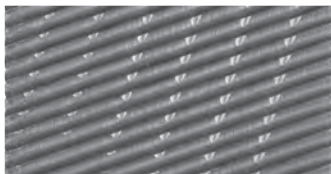
A hybrid between the Save Edge Photo Finish and the Save Edge 14" Beast Rasp. It has a sharp rasp side, designed to remove material easily with little effort. The White Horse is 10% wider and thinner than our Photo Finish Rasp making it more efficient to use. With a wider working surface, it makes levelling and flattening easier on the hoof. The file side has very sharp edges with an overlapping cut which leaves a very smooth, glossy finish.





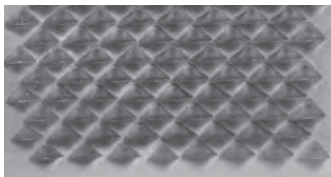
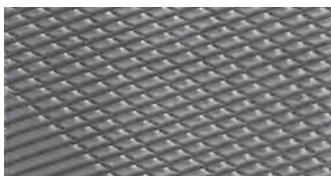
### Photo Finish Rasp 14"

Combines the best of both worlds: the Save Edge Original rasp teeth on one side and our super smooth cutting teeth on the other. The sharpness and speed of the Original rasp teeth and the perfect finish on the file side makes the Photo Finish the rasp of choice for live shoeing competitors worldwide.



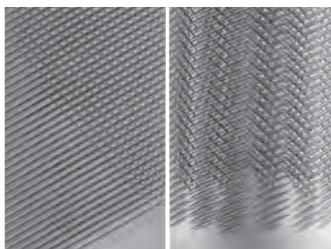
### Beast Rasp 14" & 17"

40% more cutting surface than a normal rasp. The extra width provides ease in leveling hooves, while the extra length is perfect for large hooves like the draft horse. With the 17" model you have the maximum cutting surface available.



### 14" Half Round File

Perfect balance of speed and precision. Its sharp teeth make quick work of shaping steel or horn surfaces. Crafted from top-quality steel for lasting performance. The sharpest half round file in the market.



Original Drive-On Handles



Wide Drive-On Handles



FIND SPECIFICATIONS AND VIDEOS OF SAVE EDGE RASPS IN ACTION AT [FARRIERPRODUCTS.COM/SAVEEDGE](http://FARRIERPRODUCTS.COM/SAVEEDGE)

# Baldor Grinders & Attachments



## Baldor 1/2 hp Grinder

- Sold with no attachments allowing you to add the attachments that will work best for you (shown with 10" and 6" Expander wheels)
- Expander wheels (6" and 10") mount with no adapters necessary
- Shaft is 5/8", approximately 2-1/2" long
- 3600 rpm, 120V
- Made in USA



## Baldor 1/4hp Grinder

- 1/2" shafts, extended by 1" on each end to make it easier to keep knives away from the housing (shown with Sharpening Wheel and Felt Wheel)
- 1800 rpm, 120v
- Made in USA
- Painted red, to avoid confusing it with the 1/2hp grinder

## Zirconia Belts

- Mid range price, high level performance
- 24, 40, 100 and 120 grit options



## Cubitron Belts

- Cut faster and cooler
- Outlasts conventional Zirconia and Ceramic belts
- 36 grit



## RazorStar Belts

- 10" Expander Wheel, 2"x36" and 2"x48"
- 36 grit



## Ceramic Belts

- Excellent life and performance
- Out-performs Zirconia in most hard to grind, tight tolerance finish requirements



## FootPro Shop Accessories

- Expander Wheels & Guards
- Blending Wheel
- Grooved Felt Wheel
- Buff/Sharpening Wheel
- Cotton Wheel
- Economy Sharpening Wheel
- Muslin Buffing Wheel
- Sisal Wheels
- Ceramic Flap Discs
- Zirconia HD Flap Disc
- Heel Finish Disc w/Spacer
- Grinding Discs
- Bench Grinder Double Discs (Ceramic and Zirconia)
- 3M 7" Cubitron Disc
- Sandbox 18" HR Belts
- Sandbox Dual HR Belts
- Rubber Belt Cleaning Stick
- Buffing Compounds
- Mini Air Pump
- Shaft Extensions

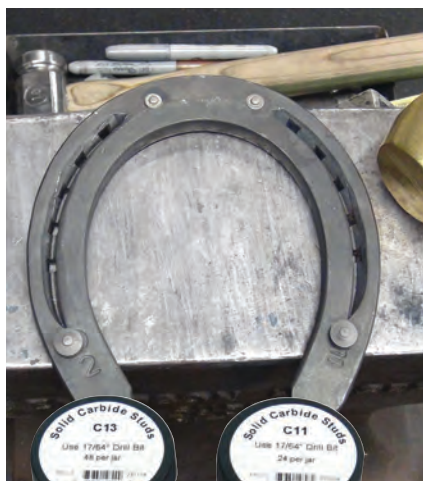
FIND SPECIFICATIONS AND VIDEOS OF GRINDERS AND ABRASIVES IN ACTION AT [FARRIERPRODUCTS.COM/ABRASIVES](http://FARRIERPRODUCTS.COM/ABRASIVES)



# Traction Products

## FootPro Solid Carbide Studs

- Solid carbide provides excellent wear and traction on hard surfaces
- Packed in small jar for easy storage and access
- Simple drive-in application with drilling of 17/16" hole
- Best to use a brass or soft face steel hammer to install
- C11 is equivalent to P-11
- C13 is equivalent to P-13
- The C11 has 24 studs per jar and C13 has 48 studs



## KnKut Drill Bits

Made in the U.S., using high quality material and precise specifications.

- 9/64" Stubby Bit
- 1/4" Step Point Bit
- 17/64" Step Point Bit
- 17/64" Stubby Drill Bit
- 5/16" Step Point Bit
- 3/8" 16 Spiral Point Tap

## Traction Accessories

- Diamond Tungsten Pins
- KnKut Cutting Fluid
- 5/16" Countersink bit
- 17/64" Countersink Drill Bit
- Bloom C11 Stud Set
- Bloom C13 Stud Set
- FootPro Brass Hammer



## FootPro Drive-in Studs

- Provides traction and confidence for trail riding, blacktop or concrete
- Drill with 17/64" bit
- Tapered shaft for excellent seating



FIND SPECIFICATIONS AND VIDEOS OF TRACTION PRODUCTS IN ACTION AT [FARRIERPRODUCTS.COM/TRACTION](http://FARRIERPRODUCTS.COM/TRACTION)

# Hoof Stands & Accessories

Comfort for the horse, ease for the farrier, horseowner and veterinarian.



## Standard Hoofjack Base

- Accommodates a pony up to a small draft or draft cross (hooves up to a size 7)
- Available in pink, purple, red and green
- 12.5"h x 18"w



## Medium Hoofjack Base

- Designed specifically for users under 5'10" (or a floor to bottom of kneecap distance of less than 18") when using the cradle on the front hoof
- Accommodates a pony up to a small draft or draft cross (hooves up to a size 7 shoe or less than 7-3/4" wide)
- Same base diameter as the Standard Hoofjack but is 3" shorter
- 9.25"h x 18"w



## Mini Hoofjack Base

- Perfect height and width to support the hooves of miniature horses
- 7.5"h x 12.5"w



## Pastern Cradle

- Double cradle with durable webbing securely supports the hind hoof and pastern bone
- Stable platform allows the farrier to work easily and in more relaxed manner
- Fits all Hoofjack bases
- 14.5" - 24.5"



## POST DIMENSIONS

Item	Adjustable Height	Fits Base
Draft	14.5" - 24.5"	Std
Std	14.5" - 24.5"	Std
Med	11" - 18"	Med
Mini	9.5" - 14"	Mini

## CRADLE DIMENSIONS

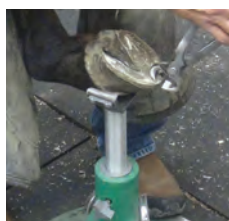
Item	Adjustable Height	Fits Base
Draft	14.5" - 25"	Std
Std	15.5" - 24.5"	Std
Med	13" - 20"	Med
Mini	9.5" - 14"	Mini



**Dental Attachment**

**Dental Attachment Articulated**

**FootPro Limb with Diamond Training Hoof**



**Mini Cradle with Standard Height Post**

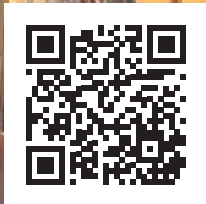
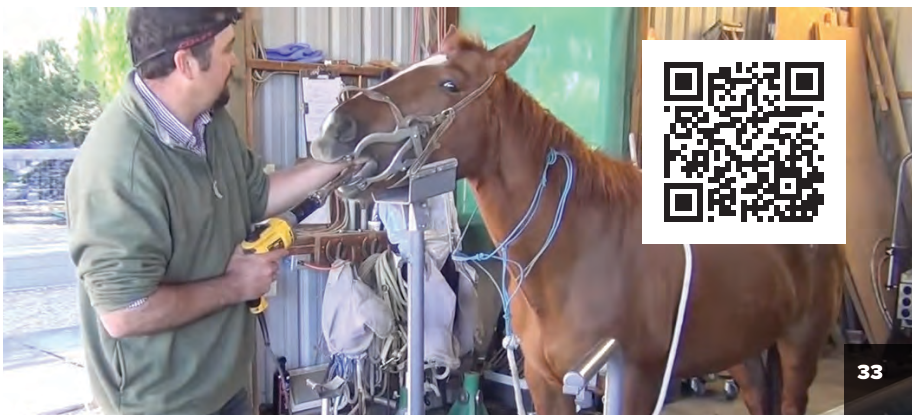


**Hot Fit Plate**



**Hoofjack Table**

FIND SPECIFICATIONS AND VIDEOS OF HOOFJACK IN ACTION AT [FARRIERPRODUCTS.COM/HOOFJACK](http://FARRIERPRODUCTS.COM/HOOFJACK)



# Pour-In Hoof Care



## Vettec Equi-Pak

- Liquid urethane that sets in 30 seconds
- Used as a pour-in pad to provide comfort, protection and therapeutic support
- Bonds directly to the sole and frog and can be used by itself as an instant pad, or as a packing underneath a pad
- Limits exfoliation, promotes sole depth and makes the bottom of the hoof impervious to injury from sharp objects



## Vettec Equi-Pak Soft

- All the features of Vettec Equi-Pak, but sets in 40 seconds
- Noticeably softer than Equi-Pak



## Vettec Equi-Pak CS

- Copper sulfate infused liquid urethane that sets in 60 seconds
- Used as a pour-in pad to provide comfort, protection and therapeutic support for equine feet
- Bonds directly to the sole and frog and can be used by itself as an instant pad, or as a packing underneath a pad
- Limits exfoliation, promotes sole depth and makes the bottom of the hoof impervious to injury from sharp objects



## Vettec Sil-Pak

- Non-bonding, skin-safe silicone packing material, weight bearing in 2 minutes
- Dispensed under a pad to seal, protect and cushion the equine foot
- Totally fills and seals all void areas and prevents debris migration



## Vettec Sil-Pak Soft

- All the features of Sil-Pak but with a shore hardness of 15 (Sil-Pak is approximately 35)

# Adhesives and Repair

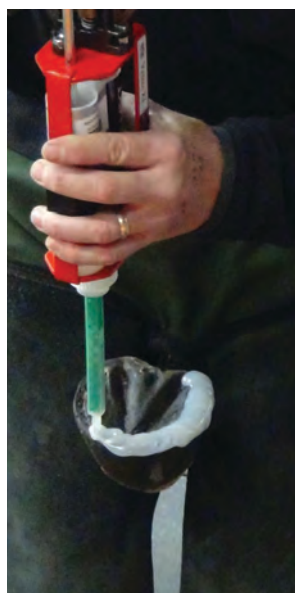
## Vettec Adhere

- Multipurpose, fast-setting urethane adhesive designed to bond steel, aluminum and urethane shoes to the hoof and to fabricate large and small hoof wall repairs
- Sets in 60 seconds, is weight bearing after 3.5 minutes and is fully cured in 6 minutes
- Maintains the flexibility necessary at the quarters and heels to allow the natural movement of the hoof
- Black color dresses to gray



## Vettec SuperFast

- Fast setting, highly durable urethane formula that is ideal for making custom shoes directly on the hoof, as well as medial, lateral and toe extensions on foals
- Sets in 30 seconds and is weight bearing in 2.5 minutes
- Custom shoes made from Super Fast, when properly applied, should last 5 to 6 weeks or longer
- Can also be used to repair hoof wall defects, externally modify shoes and glue-on wood and urethane clogs



## Vettec Sole-Guard

- Black liquid urethane that can be used in a variety of applications to produce an extremely durable pad on shod and unshod equine feet
- Sets in 30 seconds
- Bonds to the sole and frog and can be used as a thin protective pad, or a thicker, supportive pad



FIND SPECIFICATIONS AND VIDEOS OF VETTEC HOOF CARE AND ACCESSORIES IN ACTION AT [FARRIERPRODUCTS.COM/VETTEC-EQUINE](http://FARRIERPRODUCTS.COM/VETTEC-EQUINE)



# Plexus Hoofcare



Made in the U.S., Austin Edens' Plexus Pads feature a patent pending, common sense design. The shape and design of the pads allow for easy fit on front or hind for more hoof sizes; reducing the need for more inventory. High quality injection molded material allows for resets. Available in Flat and Degree.

FIND SPECIFICATIONS AND VIDEOS OF PLEXUS PRODUCTS IN ACTION AT [FARRIERPRODUCTS.COM/PLEXUS](http://FARRIERPRODUCTS.COM/PLEXUS)



## Open Toe Caudal Support Pads

- Frog plate is tapered for heel fit, reducing the need for trimming or grinding pads or heels of shoes
- Open toe design minimizes trapping of foreign materials in the front half of the foot



## Full Support Pads

- A hybrid design, size S-M, to minimize the number of sizes you need to carry; easily fits shoe sizes 00 through 3



## Plexus CS Gel

- Copper sulfate and vinegar ratio makes an effective treatment and preventative for white line and other bacterial/fungal issues in the horse's foot
- Gel formula flows easily yet coats and penetrates treated area effectively

## FOOTPRO HOOF CARE



## FootPro Soft DIM20 and Firm DIM40



- Non-toxic, non-allergenic formula that does not adversely affect structures of the hoof, not affected by moisture
- Easy to mix two equal parts by hand



## FootPro Cast 2" and 3"

- Dry application technique provides greater working time and control
- Resin impregnated fiberglass mesh fabric conforms to the hoof, provides support, wear protection and stabilizes the whole hoof



# Professional Farriers Demand THE BEST

## FPD DOES TOO

### WHAT'S NEW

**KERCKHAERT DURA MAX**



**KERCKHAERT TREK**



**KERCKHAERT PRIME FIT**



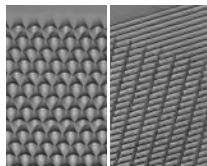
**KERCKHAERT PRIDE 7/8" SIZE 11.5**



**HOOFJACK PASTER CRADLE**



**DIAMOND EXCEED RASP**



**LIBERTY SECURE HARD TOP NAILS**



**BLOOM FORGE HOT FIT LOCK TONG**



FIND AN FPD DEALER NEAR YOU CARRYING THESE EXCITING NEW PRODUCTS AT [FARRIERPRODUCTS.COM/LOCATIONS](http://FARRIERPRODUCTS.COM/LOCATIONS) OR CALL (800) 468-2879.



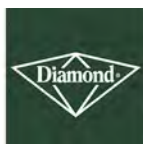
@farrierproductdistribution



@fpdinc



@farrierproducts



**FIND AN FPD DEALER NEAR YOU AT  
FARRIERPRODUCTS.COM/LOCATIONS OR  
CALL (800) 468-2879.**

PO Box 1328 | Shelbyville, KY 40066  
(800) 468-2879 | (502) 633-5863  
fpd@farrierproducts.com  
[www.farrierproducts.com](http://www.farrierproducts.com)

